



# SEAOSC NEWS

Structural Engineers Association of Southern California

5360 Workman Mill Rd., Whittier, CA 90601

Tel: (562) 908-6131 Fax:(562) 692-3425 E-mail: seaosc@seaosc.org Website: www. seaosc.org

May 2010

## President's Message

By Michael Cochran S.E., SECB

### The World Keeps Rumbling

Easter Sunday afternoon, around 3:40 p.m., Los Angeles City shook and rattled a little bit due to the Magnitude 7.2 Baja Earthquake, whose epicenter was approximately 220 kilometers away, about 30 miles south of the U.S. border town of Calexico and Mexico border town of Mexicali. The reported damage in the U.S. was minor: some broken pipes and windows and contents shaken from shelves. There is not a lot of seismic information available south of the border in this area since the United States Geological Survey (USGS) doesn't maintain any monitoring stations in this area of Mexico as part of the Global Seismic Network.

### Twitter and Engineers

The amazing thing about this earthquake is the rapidness by which information was disseminated to people in the United States, particularly by those using their Twitter accounts. Within 20 minutes the New York Times posted an article based upon phone conversations and

"Twitter" postings about damage and who-felt-what due to the earthquake. Twitter was quickly filled with earthquake reports from individuals residing in Los Angeles, to San Diego and along the Mexican border to Phoenix, Arizona. Within a couple of hours, the Associate Press (AP) had posted on the "YouTube.com" website several short one-and-a-half-minute videos about the 7.2 Baja Earthquake.

Now granted, much of this Twitter information isn't technical and may not be of much scientific use, but it does show how powerful these text messaging services and "YouTube" video sites can be for quickly transmitting information to others. Organizations involved with Earthquake Preparedness are now suggesting for those individuals trying to get in touch with family members and friends in the aftermath of an earthquake to use text messaging and keep the phone lines



(Continued on Page 2)

## L.A. Dinner Meeting

Wednesday, May 5

**Program:** Hoover Dam  
Bypass Bridge

**Speaker:** Mark Ketchum, Ph.D.

**Location:** Luminarias Restaurant,  
Monterey Park

**Time:** 5:30 pm: Social Hour

6:30 pm: Dinner

7:30p: Program Presentaion

**Menu:** Mexican Plate.

(Vegetarian available if  
requested by Noon, May 3)

**Cost:** \$30 (Full-time students: \$15)

(See insert for reservation form and  
details.)

## Tri-Counties Dinner Mtg.

Wednesday, May 12

**Program:** (Part 3 of PD&D)  
How to Design & Specify  
Cost Effective Soil Nail  
Walls

**Speaker:** Brett Mainer, P.E., G.E.,  
Drill Tech Drilling &  
Shoring, Inc.

**Location:** Mulligan's Café,  
Santa Barbara

**Time:** 5 p.m. Social Hour

6 p.m. Dinner

7 p.m. Program

**Menu:** Short Ribs

**Cost:** \$30 (Full-time students: \$15)

(See insert for reservation form and  
details.)

# President's Message *(Continued From Page 1)*

open for more important emergencies.

So why would this be interesting to a structural engineer? My first thought is that Earthquake Rapid Damage Assessment Teams and Disaster First Responders can benefit from text messaging in directing and re-directing resources and people to the damaged areas requiring immediate rescue and evaluation based upon immediate feet-on-the-ground field assessments. Sure some rules/guidelines need to be developed on how to best use this text messaging tool, but I won't be surprised to see this included as part of the California Safety Assessment Program (SAP) workshops in the near future or in their renewal programs. The only downfall is how long cell phone batteries will last, and limited access to recharging capability in order to reach the internet when most likely all electrical power is out and computer internet access is offline in the disaster area. Hopefully there will be ways to work around these obstacles.

## **SEAOSC Webinars**

Hopefully by now you are all aware that SEAOSC is putting on monthly webinars, conveniently scheduled during the lunch hour from 12 p.m. to 1 p.m. The webinars are generally 50 minutes long and include a set of notes to go along with the presentation.

As of the May Newsletter, SEAOSC has presented three webinars, all of which are available for purchase from the SEAOSC Store at [www.seaosc.org](http://www.seaosc.org). A presentation by Assistant Professor John Lawson, S.E., of Cal Poly San Luis Obispo is scheduled for our May 26th webinar, "*New Tools for Engineering Large Wood Diaphragms*". As with the previous webinars, we hope that our membership will find this webinar topic worthwhile and of sufficient enough interest to sign up.

The SEAOSC Board of Directors would like your feedback on the webinar program, especially what engineering topics and/or speakers you would like to see in the future. Please direct all comments to

either myself or our executive director, Don Gilbert, at [SEAOSC@seaosc.org](mailto:SEAOSC@seaosc.org). Listings of future webinar presentations can be found at [http://www.seaosc.org/seaosc\\_webinars.cfm](http://www.seaosc.org/seaosc_webinars.cfm).

## **California Senate Bill 1227**

A hearing on California Senate Bill 1227 was to be held Apr. 14<sup>th</sup> for the senators' education committee to learn about the issue. This is occurring after the writing of the SEAOSC monthly Newsletter's Presidents Message, so I can't report what the current status of this bill is. Since this is the first reading for the senators' education committee, there was likely both pro and con testimonies and a vote then taken as to whether to pass this bill out of committee or not. A majority vote is required for passage out of committee.

Hopefully the bill was killed by this committee vote and will not proceed forward to the capital floor for a second reading and on to the Assembly for additional review and voting. To find out the current status, you probably need to either talk to someone following this Senate Bill or going on-line to see the posted status.

For those that have forgotten, or didn't know, SB 1227 has been introduced by Senator George Runner (CA 17<sup>th</sup> district) and sponsored by "The State and Consumer Services Agency" to do away with DSA's responsibilities for reviewing schools; grades K-12 and community colleges. SEAOSC is currently working with other associations and groups to defeat this senate bill, so that the design review of California schools remains with DSA.

Hope to see you all at the joint May Dinner Meeting with ACI.

# Seminars To Be Held May 5, 8, 12, 15 & 22

SEAOSC has planned a busy May for members -- no fewer than five seminars and seven topics.

A joint Dinner Meeting with the American Concrete Institute (ACI) Southern California Chapter will be held **May 5** in L.A.: Mark Ketchum, Ph.D., will present the “[Hoover Dam Bypass Bridge: Construction and Engineering Challenges and Lessons Learned](#)”. The presentation will focus on the construction and construction engineering of the bridge. Topics will include the overall erection method, segment casting, geometry control, protocols to assure strength and serviceability, wind, the inelastic time dependent analyses that were critical to achieving target serviceability and geometry, and some of the lessons learned in completing this challenging new bridge. Social hour begins at 5:30 p.m., dinner at 6:30 p.m. and the program presentation at 7:30 p.m.

On Saturday, **May 8** a seminar entitled “[Innovative Technologies for Bigger, Stronger, Better Wood Buildings](#)” cosponsored by SEAOSC and WoodWorks California will be held at The Grand Event Center in Long Beach.

Wednesday, **May 12** will feature a Practical Design & Detailing Seminar at Mulligan’s Café in Santa Barbara. Starting at 3:30 p.m., Jeff Haight, S.E., of Ehlen Spiess & Haight will speak on “[Hurricane Katrina: Structural Damage and Human Experiences](#)”. Hurricane-induced levee failures caused 3 to 14 feet of flooding throughout St. Bernard Parish. Volunteer structural evaluators from California applied their post-earthquake assessment training to flood-damaged structures and encountered residents returning home to view the devastation for the first time.

This will be followed by Matt Barnard, S.E., Associate Principal, Degenkolb Engineers, Los Angeles Office who will speak on “[Making the “CASE” for Risk Management and Improving Business Practices](#)”. Born out of a professional liability insurance crisis, and formed within one of the most powerful and influential engineering organizations in the Nation, the Coalition of Ameri-

can Structural Engineers (CASE) is a 20-year-old organization dedicated to the professional and financial success of structural engineering firms nationwide. CASE provides a forum for action to improve the quality of structural engineering through the enhancement of business practices, decreased professional liability exposure, and increased profitability. In our litigious society and with the ever-increasing complexity of structural engineering and the construction industry, the CASE guidelines, contracts, and toolkits are there to assist your structural engineering firm navigate through these challenges. Learn about the resources that can be available to your firm through CASE.

After dinner “[How to Design and Specify Cost-Effective Soil Nail Walls](#)” will be presented by Brett Mainer, P.E., G.E., Engineering Manager, Drill Tech Drilling and Shoring, Inc. Soil nail walls are often the least invasive and most cost-effective solutions for cut retaining wall applications. The presentation will cover design philosophies, details and specifications that result in optimizing the performance and cost of soil nail walls. Topics will include seismic design, corrosion protection, facing designs, and aesthetics.

On **May 15** SEAOSC’s Disaster Emergency Committee will provide “[Post-Disaster Safety Assessment Evaluator Training](#)” at the Grand Event Center in Long Beach.

At noon on Wednesday, **May 26** John Lawson, S.E. will give a Webinar on “[High Load Diaphragms](#)”. Registration is only available via the [www.seaosc.org](http://www.seaosc.org) website. Be sure to log in as a member to take advantage of SEAOSC member pricing.

Please go to [www.seaosc.org](http://www.seaosc.org) for secure online registrations or use the enclosed registration flyers. It is advised to register early to ensure a seat. Please note that confirmations will only be given to those who register via the SEAOSC Website.



DESERT  
OASEAS

**SEAO**  
2010 Convention at  
Hyatt Grand  
Champions Resort  
Indian Wells, CA



## Save the Dates: Sept. 22-25

**Are you more than ready for a peaceful desert oasis?**

Join your peers for the latest in technical information and the ever-popular social events of the SEAO 2010 Convention - and **BRING YOUR FAMILY** to enjoy the **pools** and area activities including Shields Date Gardens, horseback tours, water park, balloon flights, jeep tours, aerial tram, outdoor adventure center, air museum, desert museum, shopping shuttles, casinos and polo.



# May & June 2010 Calendar



## MAY

5	2 p.m.	Board of Directors Meeting	Luminarias Restaurant, Monterey Park
	5:30 p.m.	LA Dinner Meeting	Luminarias Restaurant, Monterey Park
6	6 p.m.	Sustainable Design Comm.	GoToMeeting
8	8 a.m.	Seminar	The Grand Event Center, Long Beach
11	3 p.m.	Existing Buildings Comm.	GoToMeeting
12	5 p.m.	Tri-Counties Chapter Dinner	Mulligan's Café, Santa Barbara
15	9 a.m.	DES Training	The Grand Event Center
18	4 p.m.	Foundations Comm.	GoToMeeting
19	12:30 p.m.	Code Committee	ICC-ES Conference Room, Whittier
20	4 p.m.	Disaster Emergency Comm.	GoToMeeting
22	Noon	Webinar: Diaphragms	GoToWebinar
26	Noon	July/Aug. Newsletter Deadline	
	4 p.m.	Seismology Comm.	Offices of MACTEC, Los Angeles

## JUNE

2	2 p.m.	Board of Directors Meeting	Luminarias Restaurant, Monterey Park
	5:30 p.m.	LA Dinner Meeting	Luminarias Restaurant, Monterey Park
3	6 p.m.	Sustainable Design Comm.	GoToMeeting
5	9 a.m.	SEAOC Board Meeting	Capitol Hyatt Hotel, Sacramento
8	3 p.m.	Existing Buildings Comm.	GoToMeeting
12	8 a.m.	Seminar	The Grand Event Center, Long Beach
15	4 p.m.	Foundations Comm.	GoToMeeting
17	4 p.m.	Disaster Emergency Comm.	GoToMeeting
26	8 a.m.	Seminar	The Grand Event Center, Long Beach

---

### SEAOSC ANNUAL EVENTS

February 3: Student Awards Night Dinner

February 20: YM Field Trip to UCSD Englekirk Center

April 30, Deadline to Submit Excellence in Structural Engineering Posterboards

June 2: Excellence in Structural Engineering Awards Dinner

August 4: Field Day

September 21-26: SEAOC State Convention

October 21: Annual Shakeout Event

Information regarding these events can be found on the SEAOSC Website:

**([www.SEAOSC.org](http://www.SEAOSC.org))**

## **SEAOSC Emergency Services News**

# **SAP Training May 15**



The SEAOSC Disaster Emergency Services Committee is offering Safety Assessment Program (SAP) volunteer training Saturday, May 15<sup>th</sup> due to the overwhelming number of requests. For details go to [www.seaosc.org](http://www.seaosc.org). Refresher training is available at [www.calema.ca.gov/Recovery/SafetyAssessmentProgram/SAP Evaluator Online Refresher Training](http://www.calema.ca.gov/Recovery/SafetyAssessmentProgram/SAPEvaluatorOnlineRefresherTraining).

Jim Barnes of CalEMA is rewriting the Safety Assessment Program Training Manual by using scores of photographs for each example of placard postings in the evaluation exercises. If you would like to be a contributor and have several photos that are illustrative of post-disaster damage here is your opportunity. Photos of post-disaster damage need not be limited to earthquakes, but could include hurricane, tsunami, mudslide, etc. For more details contact Doug Litchfield of

SEAOSC Disaster Emergency Services or Jim Barnes of CalEMA at [Jim.Barnes@calema.ca.gov](mailto:Jim.Barnes@calema.ca.gov) or 916-845-8273.

Thanks to all the SAP Evaluators willing to serve in Haiti and in Chile. No requests for SAP Evaluators were received from FEMA. Those dispatched travelled as French speaking engineers, under their own expense or through other international organizations.

***Merci beaucoup to Mikael Gartner, thanks to Donny Harris, Keith Martin and Los Angeles County USAR Task Force Team 2 for their structural philanthropy in Haiti.***

Contact info: Doug Litchfield, PE, CEM, Disaster Emergency Services: 213-217-5587.

**To sign up, go to  
[WWW.SEAOSC.ORG](http://WWW.SEAOSC.ORG)**

---

## **Join the SEAOSC ‘LinkedIn’ Group**

SEAOSC is proud to announce that it now has a LinkedIn Group where members can connect with fellow structural engineers and keep up-to-date on what’s going on with the organization and in the industry. LinkedIn is a professional networking site that is becoming a great tool for networking and to increase your visibility and connectivity as a professional.

The goal of the SEAOSC LinkedIn Group is to increase awareness of all the benefits of

membership in SEAOSC and keep engineers aware of the seminars and other news in the area.

So what are you waiting for? Join LinkedIn at <http://www.linkedin.com/> then join the group “SEAOSC Structural Engineers Association of Southern California”. Direct link to the group: [http://www.linkedin.com/groups?about=&gid=2246215&trk=anet\\_ug\\_grpro](http://www.linkedin.com/groups?about=&gid=2246215&trk=anet_ug_grpro)

For more information please feel free to contact John Greenheck at [JGreenheck@kpf-la.com](mailto:JGreenheck@kpf-la.com).

# Engineers Without Borders Orange County Professional Chapter Targets 3 Projects

Engineers Without Borders – USA (EWB) started with just a few members in 2002 in Colorado and has grown to over 12,000 today. It has 350 projects that include water, renewable energy and sanitation in over 45 developing countries. The Orange County Professional Chapter, begun in 2008, currently has 60 members and at least three projects. EWB consists of both student chapters and professional chapters. Nearly every area college campus has a student chapter. The Orange County Chapter is the first professional chapter in the greater Los Angeles area. It holds monthly general meetings and issues quarterly newsletters (go to [http://www.ewb-oc.org/Files/EWB-OC\\_NL2.pdf](http://www.ewb-oc.org/Files/EWB-OC_NL2.pdf)). The next general meeting is Tuesday May 11 at 6:30 p.m. at The Duck Club, 5 Riparian View, Irvine, CA, 92616.

## About EWB-OC

EWB-OC supports community-driven sustainable engineering projects worldwide, while fostering responsible leadership. We make a five-year commitment, and educate the community on the



*From left: Michael Gonsior, Ph.D., Health Point Person; Timothy Muli, Hydrological Engineer, Kenya Liaison, Technical Lead; John Tzeng, P.E., Health Point Person; Sean Callan, P.E., Technical Lead; and Clay Stevens, CEG, Project Lead.*



engineering and maintenance techniques. Our chapter's dedicated volunteers have undertaken three such projects in Kenya, Honduras and El Salvador.

## Bridging the Gap Through Construction Engineering

The Kenya Footbridge project of Engineers Without Borders, Orange County Professionals Chapter (EWB-OC) is a great example of how the construction of a simple and sustainable footbridge will help increase access to medical care and education for 4,200 people.

The Segera Mission Clinic (which also serves as a primary school and a source for clean drinking water) is located across the Ewaso Ng'iro River from the community of Endana in Kenya. The number of patients drops from 200 during the dry season to 50 during the rainy season. For at least four months of the year, the river becomes impossible to cross forcing the people of Endana to walk approximately 19 miles round-trip to get medical care, an exhausting trip they often postpone until

*(Continued on Page 8)*

# Engineers Without Borders Orange County Professional Chapter Targets 3 Projects *(Continued From Page 7)*

their condition is life-threatening. Our solution is to build a footbridge across the river.

## Design, construction and ownership

Our team of geotechnical and hydrological engineers went on an assessment trip in June 2009 to collect hydrological, site and general health data. After assessing several options for sustainability, the suspended bridge design was chosen. In order to promote ownership, we have partnered with the local community to get labor and materials that are readily available on or near the site. Once the bridge construction is completed, the bridge committee will be given a maintenance and inspection plan to ensure the upkeep and safety of the bridge. The Segera footbridge will be constructed over the course of three separate trips. Work is anticipated to begin on June 6, 2010 and finish on Aug. 16, 2010.

## How You Can Help

The current estimate to complete the construction of the footbridge is \$35,500. An award in the amount of \$12,000 by the ERM (Environmental Resources Management) Foundation and several personal donations has brought the total amount of funds raised so far to \$15,500. Any donation you can make to help us reach our goal will be greatly appreciated! EWB-USA is a 501(c)(3) non-profit organization, and donations are tax deductible to the extent allowed by law.

For more details please visit their website:

[www.ewb-oc.org/kenyafootbridge.html](http://www.ewb-oc.org/kenyafootbridge.html)

For questions and queries, please email:

[kenya@ewb-oc.org](mailto:kenya@ewb-oc.org).

The Orange County Professional Chapter Board of Directors includes Puja Ruparel, President; Gary Gilbert, Vice President (VP) of Student Chapters; Darren Cormack, VP of Finance; Greg Hefter, VP of Communications; and Peter Do, President Ex-Officio. Committee Chairs include Andre de Greef, Fundraising; Modesto Llanos, Rotary Liaison; Bill DeJong, Local Volunteer Projects; Pearl Abarca, Newsletter; Karly Ho, Membership Coordinator; and Nancy Oh, Marketing. Project Leads include Michelle Garde, El Salvador; Clay Stevens, Kenya; and James McBryan.

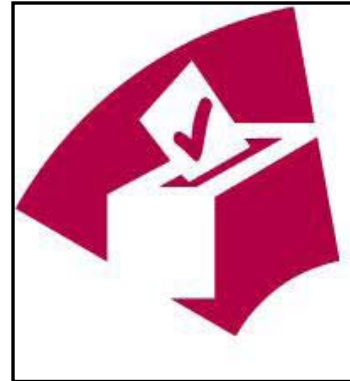


**Next SEAOSC  
Newsletter Deadline:  
May 26 for  
July-August Issue**

# First-Time Electronic Elections

For the first time in the 82-year history of SEAOSC, members will vote ELECTRONICALLY for officers and board members. This will mean a faster election, faster results and a cost savings of \$1,500 over snail-mailing postcard ballots.

All Member SE's, Members, Life Member SE's, Life Members and Honorary Members: be sure to watch your email in early May for voting information. (Check your spam box too in case this important email is deposited there.) The email will come from [seaoscamo@arcstone.com](mailto:seaoscamo@arcstone.com).



## Member Reminders

As a reminder, the SEAOSC Board of Directors works on the behalf of our membership. If there are general or specific items you would like to see the Board of Directors address or discuss please contact any of the SEAOSC Board members. Constructive and appropriately worded responses will be published in the monthly Newsletter.

### Recognition Corner

Our members don't often get much recognition for the work they do and their involvement in the community. SEAOSC wants to get the word out to our membership about what our membership has been involved in the community, so if you know of some deserving individuals, we want to know about it. Please contact myself or our Executive Director Don Gilbert so we can recognize their contribution in the SEAOSC newsletter.

### SEAOSC Tradition

Just passed your CE or SE Exam? – Then dinner is on SEAOSC!

In recognition of members who pass the California Civil or Structural Engineering Exam, SEAOSC offers a free dinner at the following month's SEAOSC dinner meeting. Typically the State mails out passing notifications in January and July; thus, such free dinners will be offered at either the SEAOSC February or September Dinner meetings. Newly passed PE's and SE's should contact Don Gilbert at the SEAOSC office to make a reservation in advance of the dinner meeting.

# Welcome New Members



**Araujo, Brandon;** *Associate Member;* [brjaraujo@gmail.com](mailto:brjaraujo@gmail.com)

**Kloos, Carl W.;** *Associate;* Nabih Youssef & Associates, Los Angeles; [ckloos@nyase.com](mailto:ckloos@nyase.com)

**Fan, Chao-Chin;** *Member;* AECOM, Orange; [annie.fan@aecom.com](mailto:annie.fan@aecom.com)

**Medeiros, Darren;** *Industry Member;* Utelite Corporation, Coalville, UT; [ucorp4@live.com](mailto:ucorp4@live.com)

**Reeder, Laima;** *Member;* Laima B. Reeder, P.E., Oxnard; [reeder.lb@gmail.com](mailto:reeder.lb@gmail.com)

**KahaneK, Christopher B.;** *Corresponding Member;* Nelson Architectural Engineers, Houston, TX; [ck@chriskahaneK.com](mailto:ck@chriskahaneK.com)

**Wexler, Matthew J.;** *Member;* MHP Structural Engineers, Long Beach; [mjwexler@hotmail.com](mailto:mjwexler@hotmail.com)



## Keep Your Contact Info Current!

SEAOSC reminds members to log in at [www.seaosc.org](http://www.seaosc.org) to update their contact information.

Members who have moved (home or office) or changed employers, should be sure to update their addresses, phone numbers, faxes and email addresses.

This information affects member website listing, SEAOC roster listing and SEAOSC mailings.

How can peers and clients (old, current and future) find you if your information is out of date?

Members who need help with their User Name and Password should email Executive Director Don Gilbert at [SEAOSC@seaosc.org](mailto:SEAOSC@seaosc.org).

# Advertisements



## where do you want to be?

If you are looking for an award winning company where you will:

- be respected
- be challenged to grow
- enjoy working with your colleagues
- have the opportunity to grow in different branch offices
- work on high profile projects

then come and join the **TMAD TAYLOR & GAINES** team!

We are currently accepting applications from candidates with the following qualifications:

- 7-10 years structural design experience in various building types
- 3-5 years experience in wood, steel, & concrete
- Excellent communication & teamwork skills, and computer proficiency
- California P.E. or S.E. preferred

Interested applicants should send resumes to:

**Ed Gharibans**

e-mail: [egharibans@tmadtg.com](mailto:egharibans@tmadtg.com)

Fax: (626) 351-5319

please visit our website at: [www.tmadtg.com](http://www.tmadtg.com)

Anaheim Inland Empire Pasadena Phoenix San Diego San Francisco Thousand Oaks

**Foothill Law & Justice Building**  
ATC 2006 Top U.S. Seismic  
Engineering Award of the 20th Century  
*First Base-Isolated Building in the U.S.*



**Providence Saint Joseph Medical Center**  
NCSEA 2006 "Finalist" in the Category of New Buildings \$30-\$100 Million  
*One of the lightest (19psf) Special Moment Resistance Frame (SMRF) buildings built after the Northridge earthquake*

**HOAG Memorial Presbyterian Hospital**  
NCSEA 2006 "Outstanding" Project Award in the Category of New Buildings Over \$100 Million  
*First Hospital Built in California with Moment Frames on Base-Isolators*



**Patriot High School**  
2006 California & Nevada Concrete Masonry Association Design Award  
*Merit Award for Sustainable Design*



*"Repair, Strengthening & Protection of Concrete Structures"*

Concrete/Masonry Repairs/Epoxy Crack Injection  
Seismic Repairs & Strengthening / Grouting  
Composite Strengthening - FRP / Shotcrete -  
Repairs/Expansion Joints  
Waterproofing

California Washington Oregon  
(714)557-6425 (206)763-9877 (503)223-9817

Contractors Licenses: CA #707880  
NV #0051493

[www.contechservices.com](http://www.contechservices.com) Contact: Brian Armor

**KPFF** Structural & Civil Engineering

DESIGN. INSPIRE.  
STRUCTURE TO STREET

Palomar Medical Center West  
DPR Construction

Los Angeles • Pasadena • Irvine

[www.kpffla.com](http://www.kpffla.com)  
[www.kpff.com](http://www.kpff.com)

Advertisements, announcements and inserts are for the information of readers and are not intended as endorsements by SEAOSC.

# Advertisements

**SBBA**

**ROBERT W. SPRACKLEN, S.E.**  
Vice President

**S. B. BARNES ASSOCIATES**  
Consulting Structural Engineers

2236 Beverly Blvd., Los Angeles, CA 90067  
(213) 382-2385 FAX (213) 352-6885  
E-mail: spracklen@sbbas.com



**Miro Lhotsky, S.E.**  
Assistant Engineer

City of  
**SANTA CLARITA**

23920 Valencia Boulevard • Suite 140 • Santa Clarita, CA 91355-2196  
Phone: (661) 255-4931 • Fax: (661) 291-1539  
mlhotsky@santa-clarita.com www.santa-clarita.com



**Williston L. Warren, IV – S.E., SECB**  
Principal Structural Engineer

**SESOL, Inc.**

*Structural Engineering SOLUTIONS for*  
structural engineering analysis, design and software  
1001 West Seventeenth Street, Suite A, Costa Mesa CA 92627  
949-722-0185 (fax) (877) 868-6527  
Bill@SESOL.com



**Fred H. Schott & Associates**  
Civil & Structural Engineers

**FRED H. SCHOTT, P.E., S.E., SECB**

200 Suburban Road, Ste A  
San Luis Obispo, CA 93401

Tel: 805/544-1216  
Fax: 805-544-2004

From Santa Maria

Tel: 805/925-3433

e-mail: fredschott@sbeglobal.net



**BREIHZ QAZI ENGINEERING, INC.**  
Civil and Structural Engineering  
Seismic Hazard Reduction

**David C. Breiholz, P.E.**  
President

1852 Lomita Blvd., Suite 210  
Lomita, California 90717  
EMAIL: dave@bqe.com  
310-530-3050 Fax 530-0184  
www.bqeinc.com

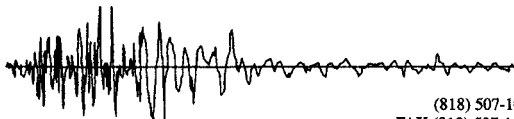
Michael Cochran, CE, SE, SECB  
Associate Principal



**WEIDLINGER ASSOCIATES® INC**  
CONSULTING ENGINEERS

4551 GLENCOE AVENUE SUITE 350  
MARINA DEL REY CA 90292-6385  
PHONE 310 315.8430  
DIRECT PHONE 310 315.8445  
FAX 310 315.8431  
www.wai.com • mcochran@wai.com

**GROSSMAN & SPEER**  
**ASSOCIATES, INC.**  
STRUCTURAL ENGINEERS



529 HAHN AVENUE, SUITE #200  
GLENDALE, CALIFORNIA 91203

(818) 507-1020  
FAX (818) 507-1556  
engineers@grossmanspeer.com  
www.grossmanspeer.com

**George Structural Drafting, LLC**

We specialize in helping companies like yours with your overflow drafting needs – ACAD or REVIT Structure 2010. And we do it in a cost-efficient way. Our rates are set so you can markup your fees and profit. We perform all work in our downtown Orange office. And since we work in your time zone, we are accessible to you during your working hours. Please contact us for our rates and qualifications. Our services are a lower-risk, more-efficient option to hiring another drafter during these volatile economic times.

Chuck George – Owner/Manager  
cgeorge@george-sd.com

714.639-4809

Advertisements, announcements and inserts are for the information of readers and are not intended as endorsements by SEAOSC.

## 2009-2010 SEAOSC Officers and Committee Chairs

Get involved! Members and interested parties are invited to join a SEAOSC committee. Contact the chairperson for information on current projects and meeting times, dates and locations.

### SEAOSC Officers & Board Members

	Name	Phone	Fax	Email
President	Michael Cochran <sup>1,2</sup>	310-315-8445	310-315-8431	mcochran@wai.com
President-Elect	Jeff Crosier <sup>1,2</sup>	949-579-1170	949-579-1180	jcrosier@miyamotointernational.com
Treasurer	Janah Risha <sup>1,2</sup>	818-729-9777	818-729-9779	jrisha@risha.com
Secretary	Doug Litchfield	626-844-5678	626-844-5642	dlitchfield@mwdh2o.com
Immediate Past President	Bill Warren <sup>1,2</sup>	949-722-0185	877-868-6527	bill@sesol.com
Directors	Brent Blackman	310-670-2460	310-734-1637	blackman@insight-se.com
	Tom Bouquet	626-304-2616	626-304-2676	tbouquet@sbise.com
( <sup>1</sup> Delegate to SEAOC)	Brett Kaufmann	714-557-8551	714-557-5530	brett.kaufmann@englekirk.com
( <sup>2</sup> Member of Exec. Cmte.)	Jeff Ellis	714-871-8373	714-879-6419	jellis@strongtie.com
	Martin Hudson	323-889-5300	323-889-5398	mbhudson@mactec.com
	Michelle Kam-Biron	805-498-4864	805-498-4864	michelle@woodworks.org
	Kevin O'Connell	310-323-9924	310-323-9925	oconnell@structuralfocus.com

### Committee

	Chairperson	Phone	Fax	Email
Building Code	Carl Sramek	562-799-6010	562-799-6010	sramekca@aol.com
Small Business	Juliet DeMoss	310-257-2008	310-534-8082	julietdemoss@caaprofessionals.com
Certification	Bill Warren	949-722-0185	949-722-0661	bill@sesol.com
Convention	Michael Cochran	310-998-9154	310-998-9254	mcochran@wai.com
Disaster Emergency Services	Doug Litchfield	626-844-5678	626-844-5642	dlitchfield@mwdh2o.com
Existing Buildings	Joseph Valancius	818-303-1300	818-847-0051	jvalancius@wje.com
Field Day	Jeff Crosier	949-579-1170	949-579-1180	jcrosier@miyamotointernational.com
Foundations	Samir Lawrence	626-440-3472	626-440-2262	samir.lawrence@parsons.com
House	Elizabeth Mahlow	310-945-4800	310-558-9697	elizabeth.mahlow@burohappold.com
Legislative	Richard Hess	562-799-9787	562-799-4973	rlhess@hesseng.com
Light Frame Performance	Doug Thompson	949-599-0320	949-599-0325	doug@stbse.com
Light Frame Systems	Tom Van Dorpe	714-978-9780	714-978-9926	tvandorpe@vcaengineers.com
LinkedIn	John Greenheck	310-665-1536	310-665-9070	jgreenheck@kpf-la.com
Professional Practices	Larry Brugger	562-570-7713	562-570-6205	lawrence.brugger@longbeach.gov
Public Relations	Michael Cochran	310-998-9154	310-998-9254	mcochran@wai.com
Quality Assurance	Herb Stockinger	909-595-0840	909-598-9204	herbstock@aol.com
Research	Bahram Zarin-Afsar	949-261-6988	949-251-8727	bahram@zarinafsar.com
Seaint Website Administrator	Shafat Qazi	310-530-3050	310-530-0184	shafat@bqe.com
SEAOSC Website	Michael Cochran	310-998-9154	310-998-9254	mcochran@wai.com
Seminar	Jeff Crosier	949-579-1170	949-579-1180	jcrosier@miyamotointernational.com
Seismology	Mehran Pourzanjani	949-250-2911	626-304-2676	mehran@sbise.com
Steel Structures	Ashwani Dhalwala	310-828-1422	310-828-1422	ceginfo@verizon.net
Student Scholarships	Lucas Floriani	714-814-0882	310-521-9994	lucas.floriani@hilti.com
Sustainable Design	Patti Harburg-Petrich	310-254-1900		pharburg-petrich@walterpmoore.com
Testing Standards(Ad Hoc)	Graeme Dick	949-380-3970	949-380-3771	gd@kspeng.com
Young Member	Arif Shahdin	949-349-6530		arif.shahdin@fluor.com
SEAOSC Office	Don Gilbert	562-908-6131	562-692-3425	seaosc@seaint.org

## Los Angeles Dinner Meeting

Wednesday, May 5, 2010

Joint Meeting with ACI

**Program:** Hoover Dam Bypass Bridge: Construction and Engineering Challenges and Lessons Learned

**Speaker:** Mark Ketchum, Ph.D.

**Location:** Luminarias Restaurant, 3500 Ramona Dr., Monterey Park

**Time:** Social time: 5:30 p.m., Dinner: 6:30 p.m., Program: 7:30 p.m.

**Menu:** Mexican Plate. (Vegetarian meal available if requested by Noon, Apr. 5.)

**Cost:** \$30.00 (Students: \$15.00)

**Reservations:** Make advance reservation before Monday Apr. 5 or email: [seaosc@seaosc.org](mailto:seaosc@seaosc.org) or via SEAOSC's web page at [www.SEAOSC.org](http://www.SEAOSC.org). SEAOSC is charged for "no-shows" so please notify office by deadline if you must cancel. Prepay by providing your credit card number and expiration date. "Walk-ins" welcome.

---

### LOS ANGELES DINNER RESERVATION FORM: May 5 Reservations Due Before May 3

Name: (print) \_\_\_\_\_ Phone: \_\_\_\_\_

If paying in advance by credit card, circle type:



Yourselves: 1 @ \$ \_\_\_\_\_ = \$ \_\_\_\_\_

Guests: \_\_\_ @ \$ \_\_\_\_\_ = \$ \_\_\_\_\_

TOTAL = \$ \_\_\_\_\_

Card number: \_\_\_\_\_ Expiration date: \_\_\_\_\_

Signature: \_\_\_\_\_ Pin (last 3-4 digits on back of card): \_\_\_\_\_

Address where you receive your credit card bill: \_\_\_\_\_ Zip Code: \_\_\_\_\_

---

Email Address: \_\_\_\_\_



**SEAOSC  
Practical Design & Detailing  
Seminar Series and  
Dinner Meeting**

**May 12, 2010**

**3:30-5:30 p.m.**

**and 7 p.m. after dinner**

**Mulligan's Cafe**

**3500 McCaw Ave., Santa Barbara, CA 93015**

- **Hurricane Katrina - Structural Damage and Human Experiences**  
By Jeff Haight, S.E., Ehlen Spiess & Haight, Inc.
- **Making the "Case" for Risk Management and Improving Business Practices**  
By Matt Barnard, S.E., Degenkolb Engineers
- **How to Design & Specify Cost Effective Soil Nail Walls**  
By Brett Mainer, P.E., G.E., Drill Tech Drilling & Shoring, Inc.  
(Presented at 7 p.m. after dinner)

(Attendance qualifies participant enrolled in SEAOSC Professional Development Program with up to 3 SEAOSC Professional Development credits.)

**Structural Engineers Association of Southern California**

**5360 Workman Mill Rd.**

**Whittier, CA 90601**

**Phone: (562) 908-6131**

**Fax: (562) 692-3425**

**E-mail: [seaosc@seaint.org](mailto:seaosc@seaint.org)**

**Website: [www.seaint.org](http://www.seaint.org)**

**Dinner Menu:  
Short Ribs**

**May 12, 2010**

**PD&D/Dinner Registration Form**

**Reservations Due By May 9**

**Registration Fees for Seminar AND Dinner:**

**SEAOSC Members:**

**Pre-registered/Prepaid: \$60**

**After May 9: \$70**

**Non-Members: Pre-registered/Prepaid: \$120**

**After May 9: \$130**

**Fees for Dinner Only:**

**Members and Non-Members: \$30**

**Notes NOT included.**

**Full-time Student Rate for PD&D Seminar and Dinner:**

**Pre-registered/Prepaid: \$30**

**After May 9: \$40**

**Dinner Only (Notes NOT included): \$15**

Circle one:

Name: \_\_\_\_\_ **Member** **Non-Member**

Phone: \_\_\_\_\_ Fax: \_\_\_\_\_

Circle one: **SEMINAR AND DINNER** or **DINNER ONLY**

Mail checks (payable to SEAOSC) to 5360 Workman Mill Rd., Whittier, CA 90601

or pay by mail, fax or e-mail (see reverse side) with VISA, MasterCard,

American Express or Discover.

Total Amount Enclosed: \_\_\_\_\_ Expiration Date: \_\_\_\_\_

Credit Card Number: \_\_\_\_\_ Pin Number: \_\_\_\_\_

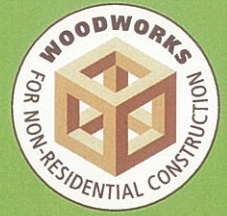
Street Address (Where You Receive Invoice): \_\_\_\_\_

Zip Code: \_\_\_\_\_ Signature: \_\_\_\_\_

PRINT Name as it Appears on Card: \_\_\_\_\_



# Innovative Technologies for Bigger, Stronger, Better Wood Buildings



Saturday May 8, 2010 • 8:00 am – Noon • Long Beach, California

Discover leading technologies that can enhance the performance of your non-residential or multi-family wood buildings. Register today and learn how you can take advantage of the latest developments in wood products and design, brought to you by SEAOSC and WoodWorks California.

## Introducing Midply Shear Walls

*Dr. Chun Ni, FPIInnovations – Forintek Division*

A new concept in shear wall design, the midply shear wall system offers numerous benefits, such as superior survival characteristics under earthquake loading. This presentation will provide the information you need to consider midply shear walls for your next project, including results of performance testing, design considerations, proposed code provisions, construction details and practices, comparative costs and examples.

*Dr. Ni is a senior research scientist in FPI's Wood Engineering Department. He is involved in the development of Canadian building codes, and participated in the NEESWood Capstone shake table testing of a six-story wood-framed building in Japan.*

## Wood-framed Tall Walls

*Renee Strand, PE, I-Level by Weyerhaeuser*

This presentation will focus on the innovative engineered lumber products available to successfully construct wood-framed tall walls. Topics will include issues associated with tall wall framing, design considerations and finger-jointed studs.

*A senior engineer with i-Level by Weyerhaeuser, Renee Strand has 25 years of engineered lumber and wood construction experience.*

## FRP Reinforcement and High Energy Resistant Structures

*Edwin Nagy, PE, University of Maine*

This session will focus on two technologies that take advantage of tension-face FRP reinforcing of wood—FRP-reinforced glulam bridge girders and FRP-coated wood sheathing and studs—and a third technology, FRP-reinforced panels, that results in added shear wall capacity. It will include the results of the university's multi-year research and testing of these technologies, as well as potential uses of the latter two in blast, seismic and hurricane-resistant structures.

*A research scientist at the University of Maine's AEWC Advanced Structures and Composites Lab, Edwin Nagy's focus is developing hybrid-composites for infrastructure applications, including wood and concrete materials combined with FRP.*

## Incorporating SIPs in Non-residential Wood Buildings

*Joe Pasma, PE, Premier Building Systems*

This presentation will highlight where and how to use SIPs in non-residential wood buildings. Topics will include panel size with respect to optimizing design and installation requirements and efficiencies, detail options for floor, wall and roof applications, conditions related to minimums and maximums (including opening distance from corners, panels over openings, roof and floor spans, panel supports for wall, roof and floor conditions, and R-values), and considerations related to seismic resistance and the tightness of a SIP structure.

*As technical manager, Joe's responsibilities include product development, engineering, teaching, testing, code development work, and involvement with organizations such as the Structural Insulated Panel Association, ANSI and ASTM related to the use of Structural Insulated Panels.*

## Reaching High with Cross Laminated Timber

*Sukh Johal, Canadian Wood Council*

"Jumbo wood" and "Plywood on Steroids" are just two of the names being used to describe cross laminated timber (CLT)—a remarkable fusion of plywood and glulam technology that was used to create the world's tallest mixed use wood structure (nine stories). This presentation will include an overview of CLT's strength, versatility and other attributes, as well as the manufacturing process, its increasing popularity in Europe, and an initiative now underway to bring this "wonder product" to North America.

*Before joining CWC as a technical advisor and midrise technical lead for the BC Wood WORKS! initiative to change the BC code to allow six-story wood-frame buildings, Sukh spent 17 years involved in the design and supply of engineered wood component products in Canada and the U.S.*



WoodWorks is an initiative of the Wood Products Council, which includes all of the major North American wood associations.



SEAOSC/WoodWorks Seminar:

# Innovative Technologies for Bigger, Stronger, Better Wood Buildings



Saturday May 8, 2010

Registration: 7:30 a.m. • Seminar: 8:00 a.m. – Noon  
Grand Event Center, 4101 East Willow Street, Long Beach, CA 90815

Circle the amount applicable to your registration:

Cost	Before May 1	After May 1
SEA Member	\$125	\$175
Non-member	\$250	\$300

Price includes breakfast and notes.

To receive the advance registration rate, registrations must be received no later than May 1. Non-members are encouraged to attend at the member rate by completing a membership application at [www.seaosc.org](http://www.seaosc.org) before May 1.

Attendees will receive four professional development credits.

*Please copy this flyer or retain this portion to reference location and times.*

### Directions

#### FROM ORANGE COUNTY –

Take the 405 north and exit at Lakewood Boulevard South. The freeway exits directly in front of Willow Street, where you will make a right turn. The next light you will come to is Grand Avenue where you will make another right turn. The building will be located on the right side of the street. Look for our conveniently located parking garage.

#### FROM LOS ANGELES –

Take the 405 south and exit at Lakewood Boulevard south. The freeway exits directly in front of Willow Street where you will make a right turn. The next light you will come to is Grand Avenue where you will make another right turn. The building will be located on the right side of the street. Look for our conveniently located parking garage.

## There are three ways to register:

1 Register online at [www.seaosc.org](http://www.seaosc.org).

2 Mail the completed registration form below with a check made out to SEAOSC, to 5360 Workman Mill Road, Whittier, CA 90601.

3 Fax the completed form with credit card information to (562) 692-3425.

*Note: Confirmations will be issued in response to online reservations only.*

Name

Organization

Email

Telephone

Fax

SEA member

Non-member

Credit card number

Expiry date

Amount

Pin (last 3 digits on back of card)

Legibly print name on card

Complete billing address (where you receive the credit card invoice)

Signature



# Post-Disaster Safety Assessment Evaluator Training

**May 15, 2010**

**Saturday, May 15, 2010**

The Grand Event Center,  
4101 E. Willow St., Long Beach, CA 90815

This seminar will provide a comprehensive overview of the Office of Emergency Services (OES) Safety Assessment Program (SAP), practical building evaluation exercises, criteria for assessing the degree of severity of facility and lifeline systems damage, and procedures for posting and barricading. Other hazards will also be covered. The ATC 20-1 Field Manual: *“Post-Earthquake Safety Evaluation of Buildings, Second Edition,”* and additional training materials will be provided.

“All registered SAP evaluators must be professionally registered engineers, professionally licensed architects, certified building officials or inspectors. They must also have a general knowledge of construction, professional experience and judgment.” One may attend the training without the above qualifications but will not receive a State-issued OES card. Those already possessing an OES card should check their expiration date. State-issued cards expire five years after the training date. Please note that older OES cards with indefinite expirations are no longer valid or recognized by OES.

Licensed or certified professionals who are members of ASCE, AIA, SEAOC or CALBO will receive a new SAP volunteer card and will be allowed to “tag” buildings in the event of a disaster. This process is not intended to identify or quantify damaged facilities but to evaluate their potential for safe use.

Structural Engineers Association of Southern California  
5360 Workman Mill Rd.  
Whittier, CA 90601  
Phone: (562) 908-6131 Fax: (562) 692-3425  
Email: [seaosc@seaint.org](mailto:seaosc@seaint.org) Website: [www.seaosc.org](http://www.seaosc.org)

# Post-Disaster Safety Assessment Evaluator Training May 15, 2010

Registration: 7:30 a.m., Seminar: 8 a.m. - Noon

Grand Event Center, 4101 E. Willow St., Long Beach, CA 90815

(Circle the amount applicable to your registration.)

Cost	Before May 8	After May 8
SEA Member	\$60	\$85
Non-member	\$120	\$145
Unlicensed	\$105	\$130

“All registered SAP evaluators must be professionally registered engineers, professionally licensed architects, certified building officials or inspectors. They must also have a general knowledge of construction practice, professional experience and judgment.”

Advance registration required no later than May 8. Non-Members are encouraged to attend at Member rate by completing a membership application at [www.seaosc.org](http://www.seaosc.org) before May 8 . Five Professional Development credits.

Mail registration form with check made out to SEAOSC, 5360 Workman Mill Rd., Whittier, CA 90601. Fax with credit card number to (562) 692-3425. ***Confirmations issued to online reservations only at [www.seaosc.org](http://www.seaosc.org)***

\_\_\_\_\_  
Last Name First Name

Telephone Number Email Address  Member SEA  Non-member of SEA

Credit Card Number: \_\_\_\_\_ Exp.: \_\_\_\_\_ Amount: \_\_\_\_\_

Pin number (last 3-4 digits on back of card): \_\_\_\_\_

Legibly print name on credit card: \_\_\_\_\_

Billing address (Where you receive invoice): Street: \_\_\_\_\_

City: \_\_\_\_\_ State: \_\_\_\_\_ Zip Code: \_\_\_\_\_

Signature: \_\_\_\_\_



## The New Structural Exam

### NCEES Raises the Bar

The National Council of Examiners for Engineering and Surveying (NCEES) is introducing a new 16-hour Structural PE examination. The current Structural I (SE I) and Structural II (SE II) exams will

be replaced by the new exam starting in April 2011. Therefore, the current exams will be offered for the last time in October 2010.

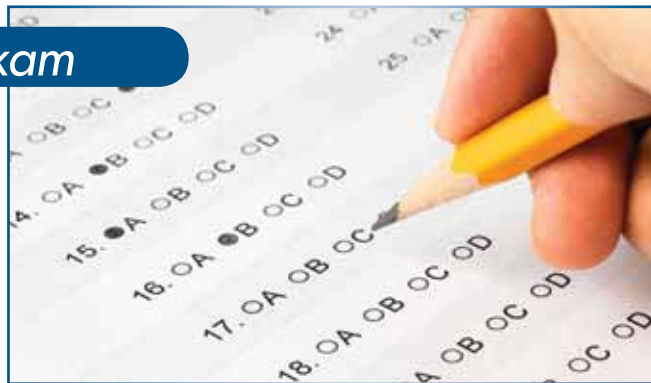
Currently, NCEES offers three different structural engineering exams: the 4-hour structural module of the Civil PE exam, the 8-hour SE I exam, and the 8-hour SE II exam. In addition, California and Washington administer an 8-hour, state-specific Structural III (SE III) exam. Oregon also uses the exam developed by Washington. There are at least eight different combinations of these exams that various jurisdictions use to qualify structural engineers for licensure.

NCEES adopted the Model Law Structural Engineer (MLSE) designation in 2004 as a guideline to a national standard for minimum competence for structural engineering licensure. To qualify for the MLSE, a candidate must meet specific education and experience requirements and pass 16 hours of structural engineering exams. The exams can be a combination of SE I and SE II, a combination of SE II and an 8-hour state-specific exam, or a 16-hour state-specific exam taken prior to 2004.

As a result of all this, there have been questions and confusion about requirements to become a licensed structural engineer from state to state. In 2006, NCEES established the Structural Exam Task Force (SETF) to address these issues. The SETF recommended the development of a new 16-hour exam for structural engineering licensure, to be designed in such a manner that its content and format would be acceptable to all jurisdictions that already offer such licensure. The SETF also recommended maintaining a structural module of the Civil PE exam and discontinuing the use of the 8-hour SE I exam for P.E. licensure. In August 2007, the SETF's recommendations were officially adopted at the NCEES Annual Meeting in Philadelphia, Pennsylvania.

To determine the new exam's content, NCEES formed a committee composed of structural engineers from all states that require 16 hours of exams for structural engineering licensure, as well as from many other states that do not. The committee developed a survey that was sent to licensed structural engineers to determine the knowledge areas most relevant to current professional practice. The committee subsequently reviewed the results of the survey and developed the exam specification accordingly. Most of the committee members are now involved in the preparation, assembly and review, and scoring of the new exam.

The test will be offered in two components on successive days. The 8-hour Vertical Forces (Gravity/Other) and Incidental Lateral component will be offered on Friday, and the 8-hour Lateral Forces (Wind/Earthquake) component will be offered on Saturday. The morning sessions will consist of 40 multiple-choice questions covering a comprehensive range of structural engineering topics. The afternoon sessions will have four one-hour essay questions and focus more closely on a single area of practice in structural engineering. Examinees will have to choose



either buildings or bridges and work the same topic area both days. The two 8-hour components may be taken and passed in different exam administrations.

At the 2009 NCEES Annual Meeting, a motion was passed to change the NCEES Model Law and Model Rules to include a 5-year window for passing both components. Once the candidate passes one component, whether Vertical Forces or Lateral Forces, the candidate will have 5 years to pass the second component. If the candidate does not pass both the components within the 5-year window, the candidate will have to retake the first component again. Currently, it is up to the state licensing boards to amend their rules in order for these changes to take effect.

The implementation of the new 16-hour exam will affect currently licensed engineers, as well as individuals taking the test for the first time, since several licensing boards have indicated that they are adopting the new exam as a requirement to become licensed as a structural engineer. However, other licensing boards will require passage of only the 8-hour Civil exam with the structural module, in order to practice structural engineering in those states as a P.E.

The licensing board in Washington has indicated that it plans to discontinue its use of their state-specific exam in favor of the new 16-hour exam. Other states, such as California, are also considering this option. This will be beneficial to examinees that do not live in these states, because they will now be able to have the new exam proctored in their own state or a nearby state, reducing travel time and expenses. Washington will offer its state SE III exam for the last time in October 2011. After that date, the only way to become licensed as a structural engineer in Washington and Oregon will be to take the new 16-hour exam, even if the person has previously passed the SE II exam. Therefore, engineers who practice structural engineering will want to plan ahead and check with the local licensing boards in the states where they practice.

The new 16-hour NCEES Structural exam is raising the bar for the structural engineering profession and has the potential to improve consistency in requirements among the various jurisdictions that have implemented separate licensure. This development appropriately reflects the unique and important responsibility that structural engineers have, for protecting the safety, health, and welfare of the public, no matter where their projects are located.

A more detailed version of this article is posted on the NCSEA website ([www.NCSEA.com](http://www.NCSEA.com)).

By Peter Vaccaro, P.E.  
Pete.Vaccaro@hdrinc.com

## Next NCSEA Webinar April 20

Wind Design using the 2009 IBC

Presented by Don Scott



Don Scott, Chairman of NCSEA's CAC Wind Engineering Subcommittee, has been with PCS Structural Solutions since 1982 and became a Principal in 1986. He has led many of the firm's educational, commercial, institutional and private projects for new and renovated construction and has authored and co-authored many technical publications on wind. He is also Vice Chairman of the ASCE 7 Wind Load Committee (since 1996), shaping future IBC provisions for wind design and Chairman of the SEAW Wind Load Committee.

In this webinar, Mr. Scott will review the development of the Alternate Wind Load Provisions of the 2009 International Building Code (IBC), to allow the user to understand the proper application of these provisions for building design. The limitations of the procedure will also be reviewed, to give guidance to the user as to when these provisions are valid and when the provisions of ASCE 7-05 are required to be used.



The cost is \$250 per internet connection. Several people may attend for one connection fee. This course will award 1.5 hours of continuing education, with a \$5 fee for each continuing education certificate requested. The times will be 10:00 Pacific, 11:00 Mountain, 12:00 Central, and 1:00 Eastern. **Register at [www.ncsea.com](http://www.ncsea.com). Approved in All 50 States.**

## Call for Entries

NCSEA 2010 Excellence in Structural Engineering Awards Program

NCSEA announces the 13<sup>th</sup> annual Excellence in Structural Engineering Awards Program. Up to three Excellence in Structural Engineering Awards will be presented in each of the following **eight** categories: New Buildings under \$10M, New Buildings \$10M to \$30M, New Buildings \$30M to \$100M, New Buildings over \$100M, New Bridge and Transportation Structures, International Structures, Forensic/Renovation/Retrofit/Rehabilitation Structures, and Other Structural Design Projects. In each category, one of the three projects will be chosen as an Outstanding Project.

Entries are due July 9, and awards will be presented at the Hyatt Regency on the Hudson in Jersey City, NJ on October 2, at the conclusion of the NCSEA Annual Conference. Winning projects will be featured in future issues of STRUCTURE® magazine. For awards program rules and eligibility, as well as entry forms, see the Call for Entries on the NCSEA website: [www.ncsea.com](http://www.ncsea.com).

## NCSEA Winter Institute, Coronado, CA

March 12-13, 2010



Professor Jose Restrepo had just returned from Chile and added some new slides to his presentation.

NCSEA's Winter Institute attendees took advantage of a great opportunity to learn from the experts about seismic design in steel, masonry, concrete and wood, as well as nonstructural components and systems, SF/SI, and performance-based design.

Friday afternoon, March 12, provided a unique learning opportunity, when attendees visited the Charles Pankow Structures Laboratory and the Robert and Natalie Englekirk Structural Engineering Center at UCSD, which hosts the NEES Large Outdoor High-Performance Shake Table, a blast simulator and two soil pits for performing soil-foundation studies.





# CONFERENCE ANNOUNCEMENT

## TALL BUILDING DESIGN SHOWCASE

FIFTH FLOOR CONFERENCE FACILITIES  
FEDERAL RESERVE BANK OF LOS ANGELES  
950 SOUTH GRAND AVENUE AT OLYMPIC BOULEVARD  
LOS ANGELES, CALIFORNIA

Convenient pay parking is available south of the building on the Olympic Boulevard

**FRIDAY, MAY 7, 2010**  
**8:30AM TO 5:30 PM**

The LATBSDC 2010 meeting will showcase new tall building designs and case studies which have been completed using contemporary performance based seismic design procedures. The LATBSDC reconnaissance team to Chile will provide a briefing on what the implications of that M8.8 event could be for tall buildings in Los Angeles and elsewhere.

=====REGISTRATION FORM=====

### TALL BUILDING DESIGN SHOWCASE

**MAY 7, 2010**

Name \_\_\_\_\_

Firm or School \_\_\_\_\_

Address \_\_\_\_\_

City, State, Zip, Country \_\_\_\_\_

Phone \_\_\_\_\_ Fax \_\_\_\_\_ E-mail \_\_\_\_\_

Early-Bird Registration Fee (if received by April 21, 2010).....	\$150
Registration Fee (if received after April 21, 2010).....	\$175
Students.....	\$ 40

It is possible to register at the door, but late registrants may not receive a copy of the Proceedings at the conference; late registrants may receive a copy of the proceedings mailed to them after the Conference. Please pay by check in U.S. currency; the Council is unable to accept credit cards or purchase orders for payment. Company checks for multiple registrations must include the name of each person being registered.

Make checks payable to: Los Angeles Tall Buildings Structural Design Council  
c/o Brandow & Johnston, Inc.  
444 S. Flower Street, Suite 400  
Los Angeles, California 90071  
Tel.: (213) 596-4500; Fax: (213) 596-4599  
Internet Address: <http://www.tallbuildings.org>  
E-mail Address: [agonzalez@bjsce.com](mailto:agonzalez@bjsce.com)



A meeting co-sponsored by the Pacific Earthquake Engineering Research Center



Program Schedule of the 2010 Annual Meeting  
**TALL BUILDING DESIGN SHOWCASE**

- 8:30-9:30AM**      **REGISTRATION**
- 9:30-9:35      WELCOME  
Michael Mehrain, President, LATBSDC
- 9:35-10:00      SIMULATED VERSUS RECORDED EARTHQUAKE GROUND MOTIONS FOR DESIGN  
Jonathan P. Stewart, UCLA
- 10:30-11:00      THE 2010 PEER TALL BUILDINGS DESIGN GUIDELINE  
TBD
- 11:00-11:30      PEER TALL BUILDING SENSITIVITY ANALYSES  
Farzin Zareian, UCI
- 11:30-12:00      DEVELOPMENTS IN THE WIND ENGINEERING OF TALL BUILDINGS  
Peter Irwin, RWDI
- 12:00-1:00PM**      **LUNCH BREAK (lunch will be served)**
- 1:00-1:15      LATBSDC AWARDS PRESENTATIONS
- 1:15-1:40      STRUCTURAL ENGINEERING OF A CHICAGO LANDMARK  
Ron Klemencic, Magnussen Klemencic Associates
- 1:40-2:05      PERFORMANCE BASED SEISMIC EVALUATION OF ICON HOTEL IN DUBAI  
Farshad Berahman, W.S. Atkins
- 2:05-2:30      AN OVERVIEW OF ATC-63 REPORT ON SEISMIC RESPONSE MODIFICATION  
Jon Heintz, Applied Technology Council
- 2:30-3:00      USING VISCOUS DAMPERS ON A 42-STORY HIGH-RISE BUILDING  
Gary C. Hart, Chukwuma G. Ekwueme, Gregg Brandow, Can Simsir, and Kingsley Ozegbe
- 3:00-3:30      Coffee Break
- 3:30-4:00      LATBSDC PERFORMANCE BASED DESIGN COURSE  
Farzad Naeim, John A. Martin & Associates
- 4:00-4:30      STRUCTURAL DESIGN OF THE NEW AIRPORT TRAFFIC CONTROL TOWER AT McCARRAN INTERNATIONAL AIRPORT  
Chukwuma G. Ekwueme and Laura Chiu, Weidlinger Associates
- 4:30-5:00      UPDATE ON MAXIMUM DIRECTION GROUND MOTION AND ITS IMPACT ON YOUR PRACTICE  
Jonathan P. Stewart and others
- 5:00-5:30      2010 CHILE EARTHQUAKE, A TALL BUILDINGS PERSPECTIVE  
LATBSDC Reconnaissance Team
- 5:30-5:45      CLOSING REMARKS
- 5:45      ADJOURN

